

## NEWS RELEASE

February 28, 2025  
PR #04 – 2025

Shares Outstanding: 330,973,461  
Trading Symbols: TSX: GGD  
OTCQX: GLGDF

---

### GoGold Announces Filing of Los Ricos South Feasibility Study Technical Report

---

**Halifax, NS – GoGold Resources Inc. (TSX: GGD) (OTCQX: GLGDF) (“GoGold”, “the Company”)** is pleased to announce the filing of a National Instrument 43-101 Feasibility Study (“FS”) Technical Report (“the Report”) at its Los Ricos South (“LRS”) Project located in Jalisco State, Mexico. The FS includes a re-engineered 2,000 tonne per day underground mine plan compared to the Preliminary Economic Assessment (“PEA”) which was released in September 2023 and incorporates an updated Mineral Resource Estimate (“MRE”). The Report is available on SEDAR+ and at [www.gogoldresources.com](http://www.gogoldresources.com).

Highlights of the FS, with a silver price of US\$26.80/oz, gold price of US\$2,330/oz and copper price of US\$4.00/lb (“Base Case”) are as follows (all figures in US dollars unless otherwise stated):

- After-Tax net present value (“NPV”) (using a discount rate of 5%) of US\$355 million with an After-Tax IRR of 28% (Base Case);
- At approximate spot metal silver price of \$30/oz and gold price of \$2,608/oz, NPV (using a discount rate of 5%) of US\$469 million with an After-Tax IRR of 34%;
- 15-year mine life producing a total of 80 million payable silver equivalent ounces (“AgEq”), consisting of 41 million silver ounces, 424 thousand gold ounces, and 11 million pounds of copper;
- Initial capital costs of \$227 million, including \$21 million in contingency costs, over an expected two year build, and sustaining capital costs of \$100 million over the life of mine (“LOM”);
- Average operating cash costs of \$9.94/oz AgEq, and all in sustaining costs (“AISC”) of \$11.19/oz AgEq over first 5 years of production, with average AISC of \$12.32/oz AgEq over the underground mine life;
- Average annual production of 7.3 million AgEq oz over first 5 years;
- Successful conversion of Mineral Resources to Proven and Probable Mineral Reserves totalling 10.2 million tonnes grading 276 g/t AgEq containing 91 million ounces AgEq, including 7.5 million underground tonnes grading 326 g/t AgEq;
- Average underground mining width of 11 metres using bulk mining method of longitudinal sub-level long-hole mining;

“With the filing of this highly detailed feasibility study, it highlights all the great work our technical team has completed over the last 6 years starting with the initial discovery building to a very large silver-gold resource. Now the Company finds itself in the position once our permit is in hand, to build our first mine in the Los Ricos district. This will be potentially followed by our second mine in Los Ricos North,” said Brad Langille, President and CEO. “We also look forward to exploring more of the exciting exploration potential in the district and the opportunity for future growth and prosperity for all stakeholders in the Los Ricos projects.”

**Table 1 – LRS FS Underground Key Assumptions and Results**

Assumption / Result	Unit	Value	Assumption / Result	Unit	Value
Total UG Ore Mined	kt	7,512	UG Mining Costs	\$/t Plant Feed	44.04
UG Silver Grade <sup>1</sup>	g/t	170	Operating Cash Cost	\$/oz AgEq	11.22
UG Gold Grade <sup>1</sup>	g/t	1.65	All in Sustaining Cost	\$/oz AgEq	12.32
UG AgEq Grade <sup>1</sup>	g/t	326	Mine Life	Yrs	12
Silver Recovery	%	86	Average Mining Width	m	11
Gold Recovery	%	93			

1. Grades shown are LOM average process plant feed grades including underground external dilution of approximately 18%.
2. The underground mining method is longitudinal sub-level long-hole mining.
3. AgEq includes gold converted at a ratio of 86.05:1 and copper % converted at a ratio of 103.4:1.

**Table 2 – LRS FS Life of Mine Key Assumptions and Results**

Assumption / Result	Unit	Value	Assumption / Result	Unit	Value
Total Plant Feed Mined	kt	10,233	Net Revenue	\$M	2,099
Average process rate	t/day	2,000	Initial Capital Costs	\$M	227
Silver Recovery	%	86	Sustaining Capital Costs	\$M	100
Gold Recovery	%	93	Mining Costs	\$/t Plant Feed	42.92
Silver Price	\$/oz	26.80	Processing Costs	\$/t Plant Feed	39.63
Gold Price	\$/oz	2,330	General and Admin Costs	\$/t Plant Feed	6.88
Copper Price	\$/lb	4.00	Operating Cash Cost	\$/oz AgEq	11.59
Payable Silver Metal	Moz	41.1	All in Sustaining Cost	\$/oz AgEq	12.78
Payable Gold Metal	koz	423.6	After-Tax NPV (5% discount)	\$M	355
Payable Copper	Mlb	11.2	Pre-Tax NPV (5% discount)	\$M	553
Payable AgEq <sup>1</sup>	Moz	79.9	After-Tax IRR	%	28.0
Mine Life	Yrs	15	Pre-Tax IRR	%	38.6
			After-Tax Payback Period	Yrs	2.6

**Figure 1 – LRS Cash Flow Profile by Year**

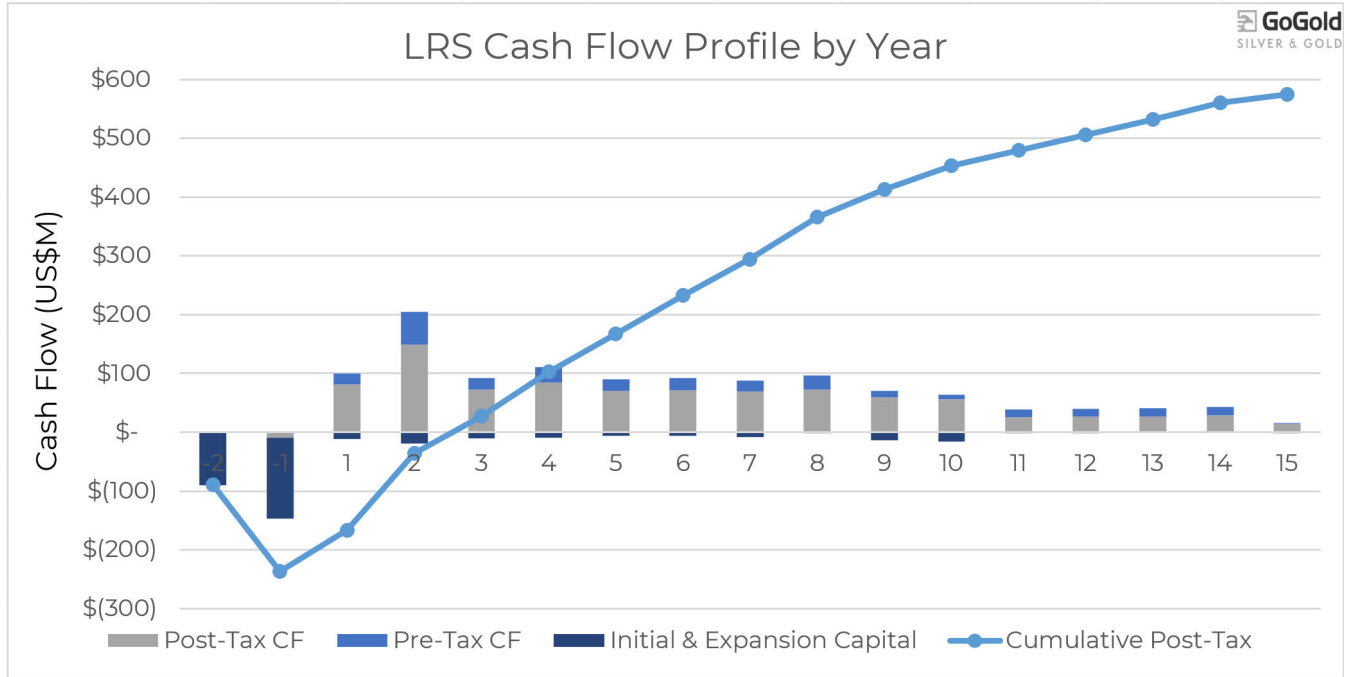
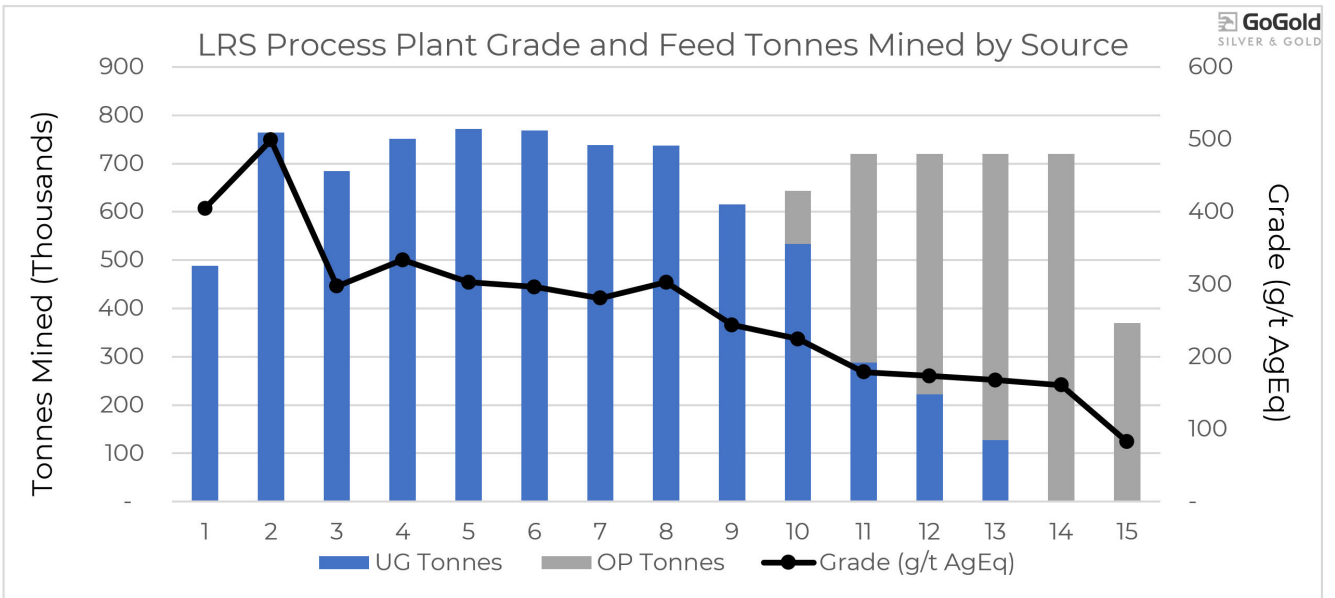


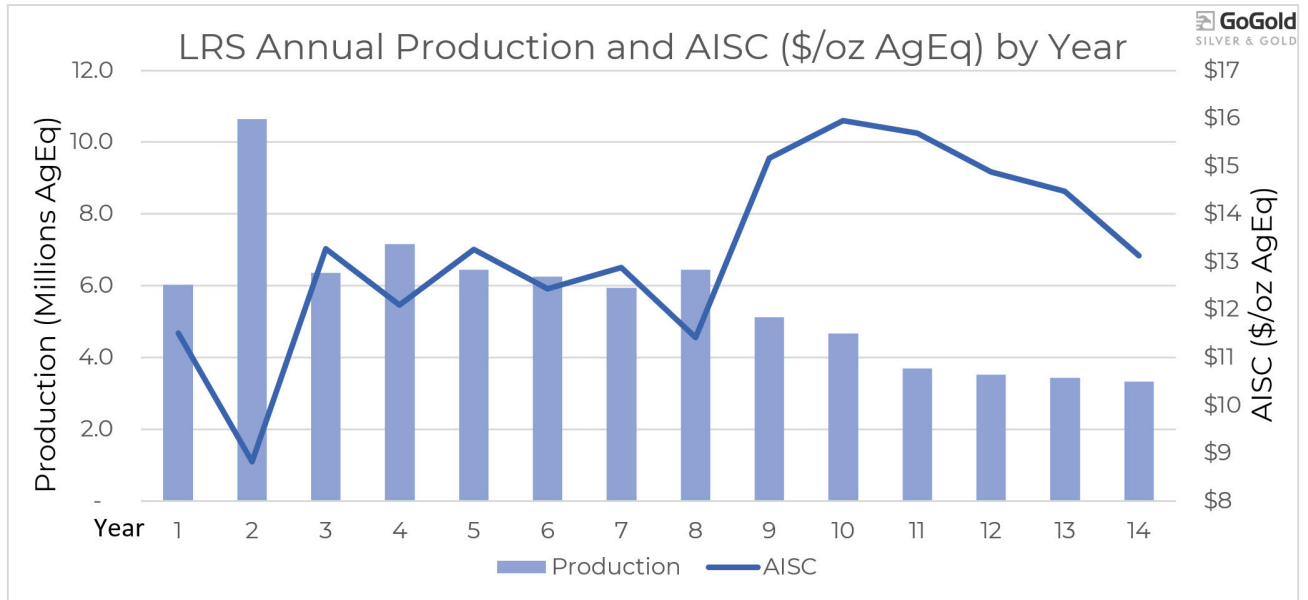
Figure 1 above highlights the excellent post-tax cash flows associated with the LRS Project. The economics of the Project have been evaluated based on the base case scenario \$26.80/oz silver price, gold price of \$2,330/oz and copper price of \$4.00/lb. As illustrated in the following sensitivity tables, the Project remains robust even at lower commodity prices or with higher costs.

**Figure 2 – LRS Process Plant Grade and Feed Tonnes Mined by Source**



The Project mine plan is primarily underground, with a 12 year underground mine life engineered, followed by an open pit mine which begins in the 10<sup>th</sup> year.

**Figure 3 – LRS Annual Production (AgEq oz ore feed) and AISC (\$/oz AgEq) by Year**



**Table 3 – LRS FS Gold and Silver Price Sensitivities**

Sensitivity				Base Case			
Silver Price (\$/oz)	20	22	24	26.80	30	33	36
Gold Price (\$/oz)	1,739	1,913	2,087	2,330	2,608	2,869	3,130
After-Tax NPV (5%) (\$M)	110	184	255	355	469	575	681
After-Tax IRR (%)	13.6	18.3	22.5	28.0	33.7	38.8	43.7
After-Tax Payback (years)	4.7	3.8	3.2	2.6	2.0	1.8	1.7

**Table 4 – LRS FS Operating Cost and Capital Cost Sensitivities**

Sensitivity	-20%	-10%	Base Case	10%	20%
Operating Costs – NPV (\$M)	440	399	355	317	275
Operating Costs – IRR (%)	32.6	30.6	28.0	26.3	24.1
Capital Costs – NPV (\$M)	394	373	355	331	310
Capital Costs – IRR (%)	35.1	30.9	28.0	24.5	22.0

**FS Summary**

The LRS Project has been envisioned as an underground mining operation for the first ten years, with contract underground mining supplying a 2,000 tonne per day process plant.

The FS was prepared by independent consultants P&E Mining Consultants Inc (“P&E”) acting as lead consultant and completing the MRE, Mineral Reserves, and mining. Additional contributing consultants and their roles were as follows:

- Ausenco – Process plant & infrastructure
- SGS Canada Inc.’s Lakefield office – Metallurgical
- WSP – Underground and Open Pit Geotechnical
- CIMA – Environmental
- Paterson & Cooke – Paste backfill
- BQE / D.E.N.M. Engineering – SART design & costing
- BCG – Tailings geotechnical

**Table 5 – LOM Capital Cost Estimate**

Type	Initial (\$k)	Sustaining (\$k)	Total (\$k)
Process Plant direct costs	83,544	10,223	93,767
Underground development	51,054	62,763	113,817
Open pit stripping		17,661	17,661
Infrastructure	38,558		38,558
EPCM	17,969		17,969
Project indirect costs	14,576		14,576
<b>Total</b>	<b>205,701</b>	<b>90,647</b>	<b>296,348</b>
Contingency (10%)	20,987	9,065	30,052
<b>Grand Total</b>	<b>226,688</b>	<b>99,712</b>	<b>326,400</b>

**Table 6 – Operating Costs (Average LOM)**

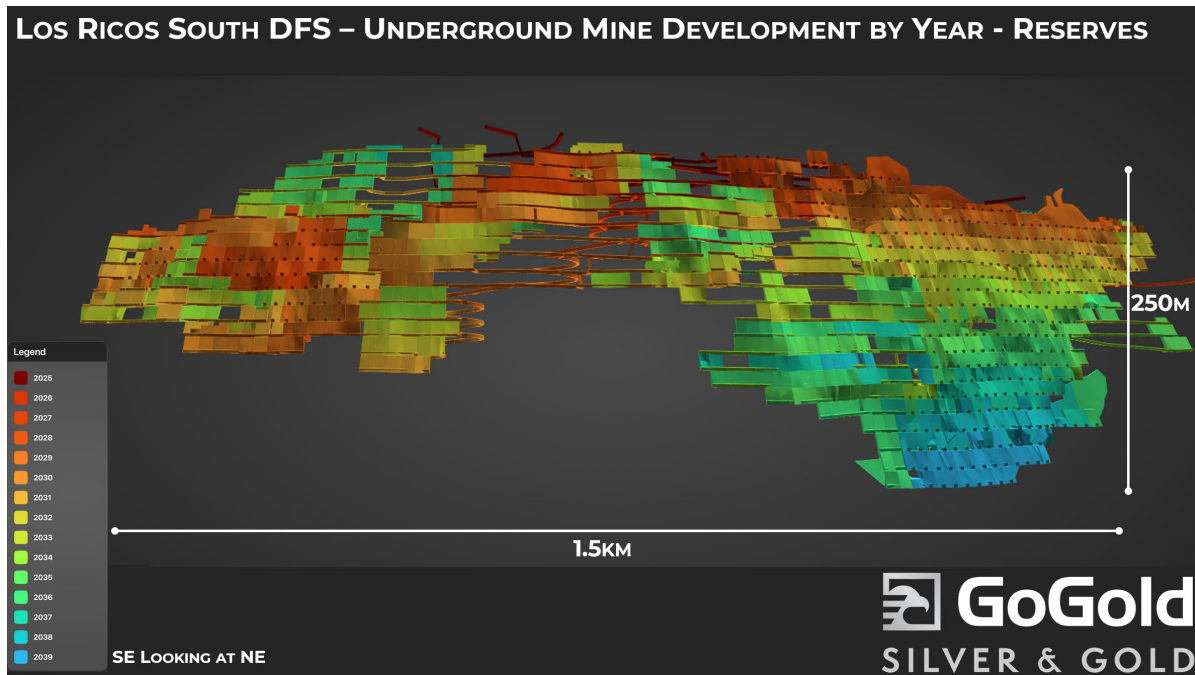
Operating Costs (Average LOM)	\$/tonne Plant Feed	\$/tonne Mined
Open Pit Mining	17.72	2.64
Underground Mining <sup>1</sup>	49.92	
<b>Total LOM Mining<sup>2</sup></b>	<b>42.92</b>	
Processing (\$/t processed)	39.63	
General and Admin (\$/t processed)	6.88	
<b>Total (\$/t processed)</b>	<b>89.43</b>	

1. Bulk underground long hole mining. \$44.04 is the mining cost, \$5.88 is cemented paste backfill, and additional development costs of \$8.35/t mined are included in sustaining capital in table 6, providing a total UG mining cost of \$58.27/t.
2. Average LOM mining cost of both open pit and underground.

## Mining

Contract underground mining will be completed using the longitudinal sub-level long-hole mining method and cemented paste back filling of the mined-out stopes. Approximately 10% of the underground ore will be sourced in close proximity to historical workings.

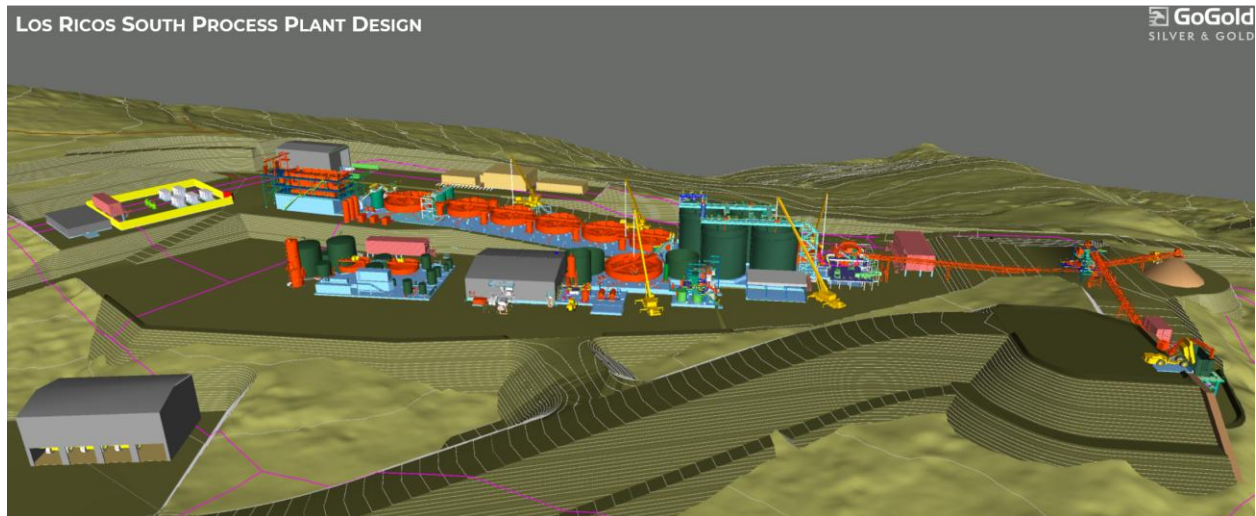
**Figure 4 – Underground Mine Plan by Year**



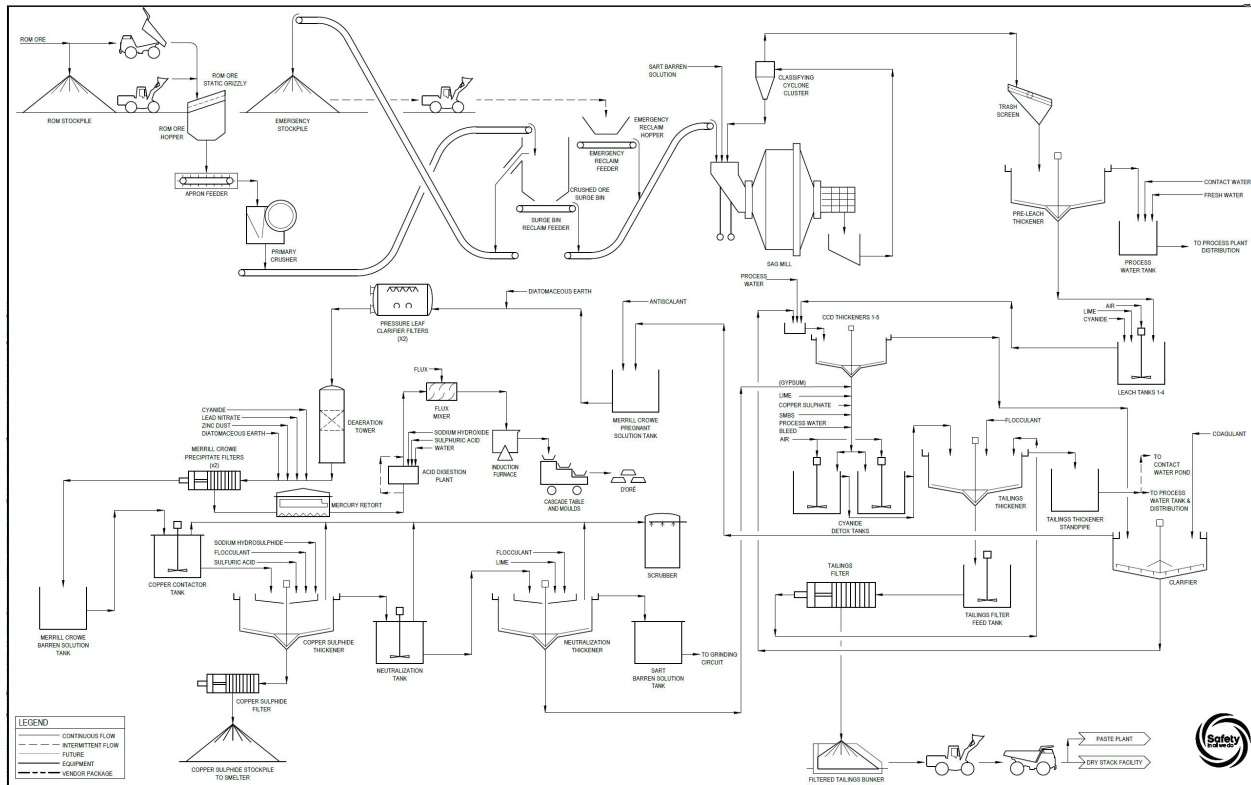
**Process Plant Design**

The process plant is comprised of conventional crushing and grinding followed by cyanide tank leaching. Back-end filtration is required to maximize water recycling (dry stack tailings) as well as a SART (sulfidation, acidification re-neutralization and thickening) circuit to recover cyanide back to the process and to produce a saleable copper sulfide product. The process plant will produce saleable silver-gold doré bars and a copper precipitate.

**Figure 5 – Process Plant Design**



**Figure 6 – Mill Process Flow Sheet**



**Metallurgy**

In support of the feasibility study on the Los Ricos South deposits, an extensive metallurgical test program was completed at SGS Lakefield on representative drill core from the deposit. The program was designed to test and validate the key components of the process to confirm process plant performance including:

- Crushing and grinding
- Thickening and filtration
- Cyanide leaching and reagent consumptions
- SART performance
- Merrill Crowe (zinc precipitation)
- Dry-stack tailings detoxification and dewatering (maximizing water recovery)

Based on the extensive program, and life of mine mill simulation, the process plant will use a conventional whole ore leaching process and simple flow sheet to produce silver-gold doré bars and a copper precipitate. The cyanide leaching process recoveries range from 92 to 93% for gold and 85 to 87% for silver. Approximately 70% of the copper was also leached.

Dewatered and detoxified tailings were tested at Paterson and Cook in Sudbury, Ontario to determine the paste backfill cement addition rate for the underground mine and to minimize process water usage. The advantages of using underground paste backfill include maximized stability of the mine and the ability to store a majority of the process plant tailings as cemented paste underground, reducing surface impact.

### **Infrastructure**

The Company has an agreement in place with the Comision Federal de Electricidad (“CFE”), which has secured an adequate power supply for LRS. Electricity for the Project is sourced from the nearby La Yesca hydroelectric dam.

**Figure 7 – La Yesca Hydroelectric Dam**



The Company has also secured the rights to the land where the process plant will be located. Agreements were entered into with multiple farmers and stakeholders providing compensation for the usage of the required land. Agreements are also in place with the local Ejido which owns the surface rights over all of those concessions included in this FS.

### **Mineral Reserves and Mineral Resource Estimate**

The basis for the FS is an inaugural Proven and Probable Mineral Reserve estimate totalling 10.2 million tonnes grading 276 g/t AgEq (145 g/t Ag, 1.39 g/t Au, and 0.10% Cu) containing 90.7 million ounces AgEq (47.8 Moz Ag, 457 Koz Au, 23.8 Mlb Cu), reflecting the successful conversion of Mineral Resources. A summary of the Mineral Reserves is provided in Table 7 and an updated Mineral Resource Estimate is provided in Table 8.



**Table 7: Los Ricos South Mineral Reserve<sup>(1-8)</sup>**

Classification	Tonnage	Average Grade				Contained Metal			
		Ag	Au	Cu	AgEq	Ag	Au	Cu	AgEq
	(kt)	(g/t)	(g/t)	(%)	(g/t)	(koz)	(koz)	(Mlb)	(koz)
<b>Underground</b>									
Proven	3,902	187	1.61	0.09	334	23,472	202	7.5	41,939
Probable	3,611	152	1.70	0.18	318	17,647	197	14.6	36,895
<b>Subtotal Underground</b>	<b>7,512</b>	<b>170</b>	<b>1.65</b>	<b>0.13</b>	<b>326</b>	<b>41,119</b>	<b>399</b>	<b>22.1</b>	<b>78,834</b>
<b>Open Pit</b>									
Proven	580	95	0.72	0.02	159	1,768	13	0.3	2,965
Probable	2,140	72	0.64	0.03	130	4,961	44	1.4	8,924
<b>Subtotal Open Pit</b>	<b>2,720</b>	<b>77</b>	<b>0.66</b>	<b>0.02</b>	<b>136</b>	<b>6,728</b>	<b>57</b>	<b>1.7</b>	<b>11,889</b>
<b>Total</b>									
Proven	4,482	175	1.49	0.08	312	25,240	215	7.7	44,904
Probable	5,751	122	1.31	0.13	248	22,607	241	16.1	45,819
<b>Total Proven &amp; Probable</b>	<b>10,233</b>	<b>145</b>	<b>1.39</b>	<b>0.10</b>	<b>276</b>	<b>47,847</b>	<b>457</b>	<b>23.8</b>	<b>90,723</b>

- 1) Mineral Reserves are based on Measured and Indicated Mineral Resource Classifications only.
- 2) Mineral Reserves are reported using the 2014 CIM Definition Standards and 2019 Best Practices Guidelines and have an effective date of January 14, 2025.
- 3) Mineral Reserves are defined within mine plans and incorporate mining dilution and ore losses.
- 4) Open Pit Mineral Reserves are based on metal prices of \$23.75/oz Ag, \$1,850/oz Au and \$4.00/lb Cu, and are constrained within optimized pit shells and designs that use 45–48° overall wall slopes, and process recoveries of 86% Ag, 95% Au and 51% Cu.
- 5) An Open Pit cut-off grade of 46.4 g/t AgEq is estimated to differentiate ore from waste and is based on cost assumptions of \$26.22/t processing, \$4.11/t site general and administrative, and 0.5% government mining tax on net revenue. Mining costs are estimated at \$2.10/t of ore and waste rock.
- 6) Underground Mineral Reserves are based on metal prices of \$23.75/oz Ag, \$1,850/oz Au and \$4.00/lb Cu, and are constrained within a mine design, and use process plant recoveries of 86% Ag, 95% Au and 77% Cu.
- 7) An Underground marginal cut-off grade of 150 g/t AgEq is estimated to differentiate ore from waste, and is based on cost assumptions of \$34.93/t processing, \$4.46/t site general and administrative, and mining costs of \$41.93/t. An Underground economic cut-off grade of 210 g/t AgEq is estimated to account for capital development costs of \$53.86/t in addition to those used to calculate the marginal cut-off grade.
- 8) Totals may not sum due to rounding.

**Table 8: Los Ricos South Mineral Resource Estimate – Pit Constrained and Out-of-Pit<sup>(1-9)</sup>**

Mining Method	Category	Tonnes	Average Grade					Contained Metal				
			Ag	Au	Cu	AuEq	AgEq	Ag	Au	Cu	AuEq	AgEq
		(M)	(g/t)	(g/t)	(%)	(g/t)	(g/t)	(koz)	(koz)	(Mlb)	(koz)	(koz)
Pit Constrained <sup>5</sup>	Measured	2.9	150	1.13	0.03	2.96	250	14,065	106	1.7	278	23,446
	Indicated	2.0	107	0.74	0.03	2.07	174	6,747	47	1.4	130	10,974
	<b>M&amp;I</b>	<b>4.9</b>	<b>133</b>	<b>0.97</b>	<b>0.03</b>	<b>2.60</b>	<b>219</b>	<b>20,812</b>	<b>153</b>	<b>3.1</b>	<b>408</b>	<b>34,420</b>
	Inferred	0.7	108	0.66	0.03	2.00	168	2,552	16	0.5	47	3,979
Pit - Cerro C <sup>6</sup>	Inferred	<b>0.6</b>	<b>43</b>	<b>0.90</b>	<b>0.01</b>	<b>1.43</b>	<b>121</b>	<b>787</b>	<b>17</b>	<b>0.1</b>	<b>26</b>	<b>2,243</b>
	Indicated	0.3	34	0.87	0.01	1.28	109	377	10	0.1	14	1,217
Out-of-Pit <sup>7,8</sup>	Measured	2.4	218	2.00	0.14	4.79	405	17,025	156	7.5	373	31,567
	Indicated	3.1	187	2.25	0.26	4.80	407	18,525	223	17.4	476	40,331
	<b>M&amp;I</b>	<b>5.5</b>	<b>201</b>	<b>2.14</b>	<b>0.20</b>	<b>4.79</b>	<b>406</b>	<b>35,550</b>	<b>379</b>	<b>24.9</b>	<b>849</b>	<b>71,898</b>
	Inferred	1.1	127	1.48	0.51	3.61	306	4,544	53	12.4	130	10,995
<b>Total</b>	Measured	5.3	181	1.53	0.08	3.79	320	31,090	262	9.2	651	55,013
	Indicated	5.6	144	1.59	0.15	3.50	296	26,059	287	18.9	632	53,549
	<b>M&amp;I</b>	<b>11.0</b>	<b>162</b>	<b>1.56</b>	<b>0.12</b>	<b>3.64</b>	<b>308</b>	<b>57,150</b>	<b>549</b>	<b>28.1</b>	<b>1,284</b>	<b>108,562</b>
	Inferred	2.2	106	1.11	0.27	2.70	229	7,473	79	13.0	191	16,191

- 1) Mineral Resources, which are not Mineral Reserves, do not have demonstrated economic viability. The estimate of Mineral Resources may be materially affected by environmental, permitting, legal, title, taxation, socio-political, marketing, or other relevant issues.
- 2) The Inferred Mineral Resource in this estimate has a lower level of confidence than that applied to an Indicated Mineral Resource and must not be converted to a Mineral Reserve. It is reasonably expected that the majority of the Inferred Mineral Resource could be upgraded to an Indicated Mineral Resource with continued exploration.
- 3) The Mineral Resources were estimated in accordance with the Canadian Institute of Mining, Metallurgy and Petroleum (CIM), CIM Standards on Mineral Resources and Reserves, Definitions and Guidelines (2014) prepared by the CIM Standing Committee on Reserve Definitions and adopted by the CIM Council and CIM Best Practices Guidelines (2019) and have an effective date of January 14, 2025.
- 4) Historically mined areas were depleted from the Mineral Resource model.
- 5) The pit-constrained AgEq cut-off grade of 40 g/t was derived from \$1,850/oz Au price, \$23.75/oz Ag price, 86% Ag and 95% Au process recovery, \$28/tonne process and G&A cost. The constraining pit optimization parameters were \$2.10/t mineralized material and waste mining cost, and 45-degree pit slopes.
- 6) The Cerro Colorado Mineral Resource was constrained to open pit mining methods only; Out-of-pit Mineral Resources are restricted to the Eagle and Abra mineralized veins, which exhibit historical continuity and reasonable potential for extraction by cut and fill and longhole underground mining methods.
- 7) The out-of-pit AgEq cut-off grade of 130 g/t Ag was derived from \$1,850/oz Au price, \$23.75/oz Ag price, 86% Ag and 95% Au process plant recovery, \$30/tonne process and G&A cost, and a \$60/tonne mining cost. The out-of-pit Mineral Resource grade blocks were quantified above a 130 g/t AgEq cut-off, below the constraining pit shell and within the constraining mineralized wireframes. Out-of-Pit Mineral Resources are restricted to the Eagle and Abra Veins, which exhibit historical continuity and reasonable potential for extraction by cut and fill and longhole mining methods.
- 8) AgEq and AuEq were calculated at an Ag/Au ratio of 86:1 for pit-constrained and out-of-pit Mineral Resources.
- 9) Totals may not sum due to rounding.

### Mineral Resource Estimate Methodology

A total of 554 drill holes totalling 90,095 metres were used in the MRE.

P&E collaborated with GoGold personnel to develop the mineralization models, estimates, and reporting criteria for the Mineral Resources at Los Ricos. Mineralization models were initially developed by GoGold and were reviewed and modified by P&E. A total of eight individual mineralized domains have been identified through drilling, surface and historical underground sampling. The modeled mineralization domains are constrained by individual wireframes based on a 0.30 g/t AuEq cut-off for low-grade domains or 3.0 g/t AuEq for high-grade domains.

Mineralization wireframes were used as hard boundaries for the purposes of grade estimation.

A three-dimensional sub-blocked model, with 3m x 3m x 3m parent and 1m x 1m x 1m sub-blocks, was used for the Mineral Resource Estimate. The block model consists of estimated Au, Ag and Cu grades, estimated bulk density, and classification criteria. Au and Ag equivalent block grades were subsequently calculated from the estimated Au, Ag and Cu grades.

Sample assays were composited to a 1 m standard length. Au and Ag grades were estimated using Inverse Distance Cubed weighting of between 1 and 12 composites, with a maximum of 2 composites per drill hole. Composites were capped prior to estimation by mineralization domain. Composite samples were selected within an anisotropic search ellipse oriented down the plunge of identified high grade trends.

Individual bulk density values were applied to mineralized domains separately and were statistically determined using 4,515 measurements taken from drill holes.

Classification criteria were determined from observed grade and geological continuity as well as variography. Measured Mineral Resources are informed by three or more drill holes within 30 m; Indicated Mineral Resources are informed by two or more drill holes within 60 m.

P&E is of the opinion that the Mineral Resource Estimate is suitable for public reporting and is a reasonable representation of the mineralization and metal content of the Los Ricos Deposits.

**Table 9: Los Ricos South & North Mineral Resources<sup>(1-4)</sup>**

Deposit	Tonnes	Average Grade							Contained Metal						
		Ag	Au	Cu	Pb	Zn	AuEq	AgEq	Ag	Au	Cu	Pb	Zn	AuEq	AgEq
		(M)	(g/t)	(g/t)	(%)	(%)	(%)	(g/t)	(g/t)	(koz)	(koz)	(Mlb)	(Mlb)	(Mlb)	(koz)
LRS Measured <sup>1</sup>	5.3	181	1.53	0.08	-	-	3.79	320	31,090	262	9	-	-	651	55,013
Indicated:															
LRN (Oxide) <sup>2</sup>	14.5	100	0.37	-	-	-	1.71	127	46,500	171	-	-	-	801	59,100
LRS (Oxide) <sup>1</sup>	5.6	144	1.59	0.15	-	-	3.5	296	26,059	287	19	-	-	632	53,549
LRN (Sulfide) <sup>2</sup>	7.8	28	0.06	0.11	0.88	1.33	1.55	114	7,011	15	19	151	229	389	28,708
<i>Total Indicated</i>	<i>27.9</i>						<i>2.03</i>	<i>158</i>	<i>79,570</i>	<i>473</i>	<i>38</i>	<i>151</i>	<i>229</i>	<i>1,822</i>	<i>141,357</i>
<b>Measured &amp; Indicated</b>	<b>33.2</b>						<b>2.32</b>	<b>184</b>	<b>110,660</b>	<b>735</b>	<b>47</b>	<b>151</b>	<b>229</b>	<b>2,473</b>	<b>196,370</b>
Inferred:															
LRN (Oxide) <sup>2</sup>	15	91	0.28	-	-	-	1.52	112	44,131	136	-	-	-	734	54,191
LRS (Oxide) <sup>1</sup>	2.2	106	1.11	0.27	-	-	2.7	229	7,473	79	13.0	-	-	191	16,191
LRN (Sulfide) <sup>2</sup>	5.5	28	0.06	0.12	0.74	1.2	1.46	108	4,888	11	15	90	146	258	19,007
<b>Total Inferred</b>	<b>22.7</b>						<b>1.62</b>	<b>122</b>	<b>56,492</b>	<b>226</b>	<b>28</b>	<b>90</b>	<b>146</b>	<b>1,183</b>	<b>89,389</b>

1. See Table 8 notes for assumptions

2. See GoGold press release #18-2023 dated June 30, 2023, or the technical report filed on that date on SEDAR+ for full details regarding the Los Ricos North ("LRN") Mineral Resource.

3. Totals may not agree due to rounding.

## Qualified Persons

The FS is prepared by consultants who are independent of GoGold, each of whom are Qualified Persons (“QP”) as defined by NI 43-101 Standards of Disclosure for Mineral. Each of the QPs have reviewed and confirmed that this news release fairly and accurately reflects, in the form and context in which it appears, the information contained in the respective sections of the FS for which they are responsible. The affiliation and areas of responsibility for each QP involved are as follows:

### P&E QPs

Eugene Puritch, P.Eng., FEC, CET – Mineral resources  
Andrew Bradfield, P. Eng. – Study leader and open pit mine design, scheduling and costs  
Greg Robinson, P. Eng. – Underground mine design, scheduling and costs  
Grant Feasby, P. Eng. – Environmental  
Fred H. Brown, P. Eng. – Mineral resources

### Ausenco QPs

Robert Raponi, P. Eng. – Metallurgy and mineral processing, recovery methods  
Scott Elfen, PE – Dry stack tailings facility design  
Jonathan Cooper, P. Eng. – Surface water management design

### WSP QP

James Smith, P. Eng. – Open pit and underground geotechnical

### D.E.N.M. Engineering QP

David Salari, P. Eng. – SART design & costing

Robert Harris, P.Eng. and David Duncan, P.Geo. are the non-independent GoGold QPs who have reviewed and verified the technical content of this news release.

## VRIFY Slide Deck and 3D Presentation

VRIFY is a platform being used by companies to communicate with investors using 360° virtual tours of remote mining assets, 3D models and interactive presentations. VRIFY can be accessed by website and with the VRIFY iOS and Android apps.

The VRIFY 3D Slide Deck for GoGold can be viewed at: <https://vrify.com/companies/gogold-resources-inc> and on the Company's website at: [www.gogoldresources.com](http://www.gogoldresources.com).

## Los Ricos District Exploration Projects

The Company’s two exploration projects at its Los Ricos Property are in Jalisco state, Mexico. The Los Ricos South Project began in March 2019, with the most recent Mineral Resource Estimate disclosing a Measured & Indicated Mineral Resource of 98.6 million ounces AgEq grading 276 g/t AgEq contained in 11.1 million tonnes, and an Inferred Mineral Resource of 13.6 million ounces AgEq grading 185 g/t AgEq contained in 2.3 million tonnes. A FS on the project was announced in this news release indicating an after-tax NPV<sub>5%</sub> of US\$355M, based on Proven and Probable Mineral Reserves totalling 10.2 million tonnes grading 276 g/t AgEq containing 91 million ounces AgEq, including 7.5 million underground tonnes grading 326 g/t AgEq.

The Los Ricos North Project was launched in March 2020 and an initial Mineral Resource Estimate was announced on December 7, 2021, which disclosed an Indicated Mineral Resource Estimate of 87.8 million ounces AgEq grading 122 g/t AgEq contained in 22.3 million tonnes, and an Inferred Mineral Resource Estimate of 73.2 million ounces AgEq grading 111 g/t AgEq contained in 20.5 million tonnes. An initial PEA on the Project was announced on May 17, 2023, indicating an NPV<sub>5%</sub> of US\$413M.

### **About GoGold Resources**

GoGold Resources (TSX: GGD) is a Canadian-based silver and gold producer focused on operating, developing, exploring and acquiring high quality projects in Mexico. The Company operates the Parral Tailings Project in the state of Chihuahua and has the Los Ricos South and Los Ricos North exploration Projects in the state of Jalisco. Headquartered in Halifax, NS, GoGold is building a portfolio of low cost, high margin projects. For more information visit [gogoldresources.com](http://gogoldresources.com).

### **For further information please contact:**

Steve Low  
Corporate Development  
GoGold Resources  
T: 416 855 0435  
E: [steve@gogoldresources.com](mailto:steve@gogoldresources.com)

#### CAUTIONARY STATEMENT:

The securities described herein have not been, and will not be, registered under the United States Securities Act of 1933, as amended (the "U.S. Securities Act"), or any state securities laws, and may not be offered or sold within the United States or to, or for the benefit of, U.S. persons (as defined in Regulation S under the U.S. Securities Act) except in compliance with the registration requirements of the U.S. Securities Act and applicable state securities laws or pursuant to exemptions therefrom. This release does not constitute an offer to sell or a solicitation of an offer to buy of any of GoGold's securities in the United States.

This news release may contain "forward-looking information" as defined in applicable Canadian securities legislation. All statements other than statements of historical fact, included in this release, including, without limitation, statements regarding the Los Ricos South and North projects, and future plans and objectives of GoGold, including the NPV, IRR, initial and sustaining capital costs, operating costs, and LOM production of Los Ricos South, constitute forward looking information that involve various risks and uncertainties. Forward-looking information is based on a number of factors and assumptions which have been used to develop such information but which may prove to be incorrect, including, but not limited to, assumptions in connection with the continuance of GoGold and its subsidiaries as a going concern, general economic and market conditions, mineral prices, the accuracy of Mineral Resource and Mineral Reserve Estimates, and the performance of the Parral Project. There can be no assurance that such information will prove to be accurate and actual results and future events could differ materially from those anticipated in such forward-looking information.

Important factors that could cause actual results to differ materially from GoGold's expectations include exploration and development risks associated with GoGold's projects, the failure to establish estimated Mineral Resources or Mineral Reserves, volatility of commodity prices, variations of recovery rates, and global economic conditions. For additional information with respect to risk factors applicable to GoGold, reference should be made to GoGold's continuous disclosure materials filed from time to time with securities regulators, including, but not limited to, GoGold's Annual Information Form. The forward-looking information contained in this release is made as of the date of this release.