





## **Figure 2: Eagle – Cross Section Holes 30,31**

While there was some historical underground mining development in the early 1900's on the Eagle concession, there was only one historical void encountered during drilling, which suggest that the mineralization at the Eagle may be intact and not previously mined. The location and high grade intercepts may indicate the presence of a high grade ore shoot that was not previously exploited. This differs from the Main Area which has had portions of it's high grade ore shoots mined out.

The results of the sampling and geophysical IP survey (Figure 3) appear to indicate that the mineralized structure continues in a Northerly direction from the Main Area. Significant geophysical anomalies were identified which will form targets for the drilling campaign.

## **Figure 3: Eagle & Main Area Geophysics**

Figure 4: Eagle + Main Area Longitudinal Section

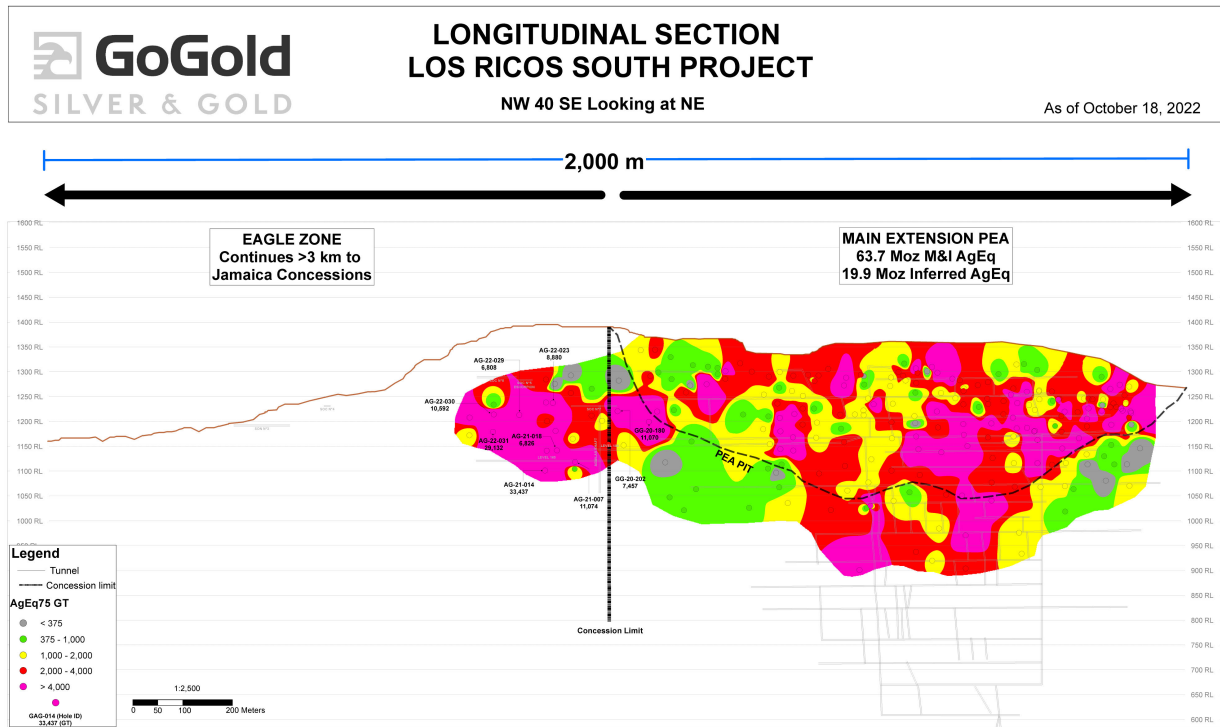
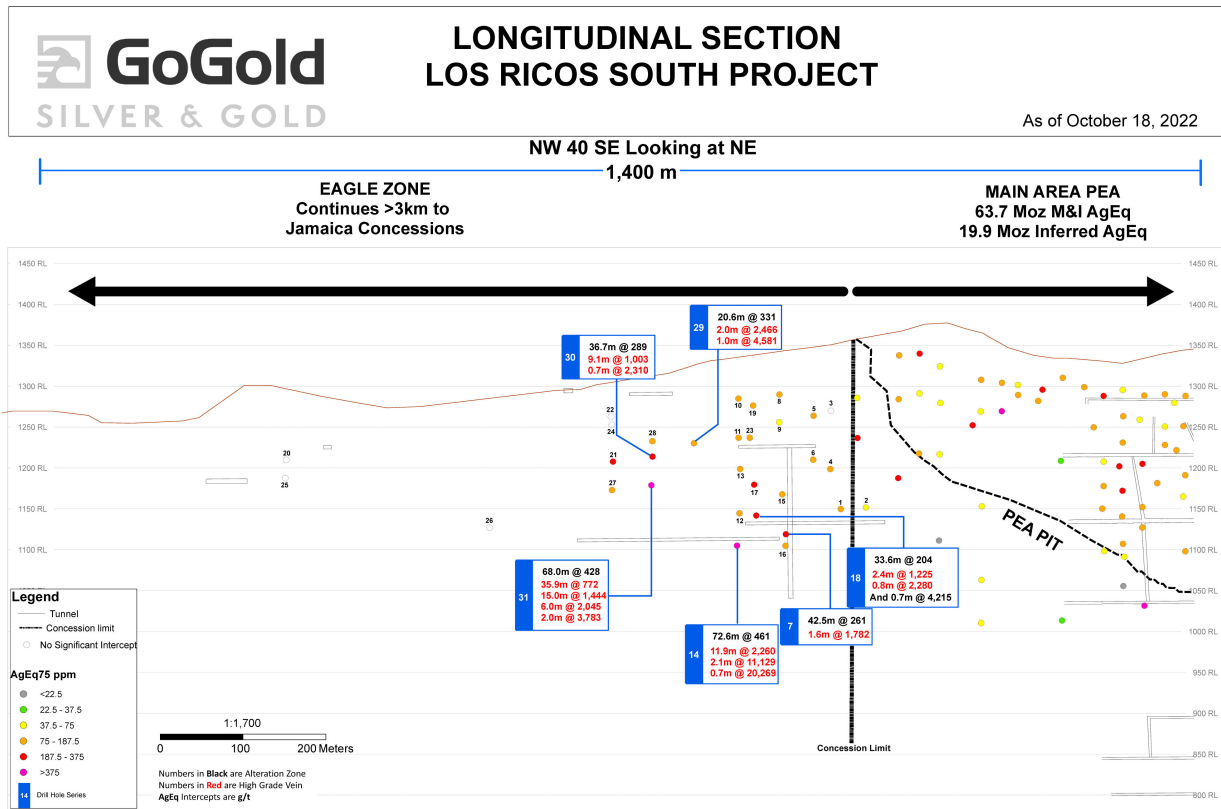


Figure 5: Eagle Longitudinal Section

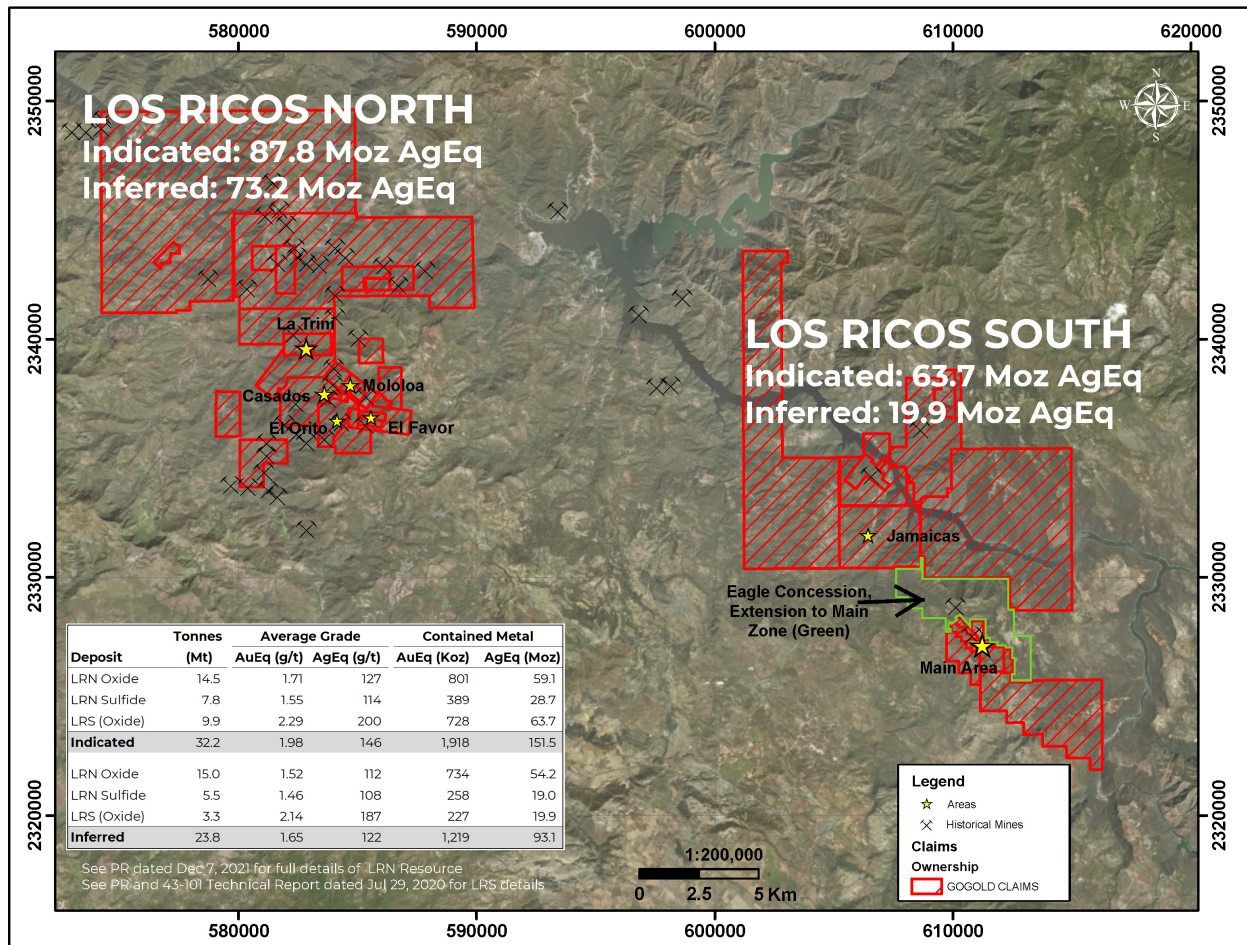


## Acquisition

The rights to the Eagle concession were acquired through the agreement to pay \$2.1 million USD to be paid over 4 years. The concession connects the Company’s concessions held in the southern portion of its Los Ricos South project, including the Main area where the Initial Resource was released, to its northern concessions in Los Ricos South, which includes the Jamaica exploration target. As a result, all of the concessions in Los Ricos South are now contiguous (Figure 6).

The Company exploration team has been completing detailed mapping and sampling at Jamaica over the last year and sees the same structure that was drilled in the main zone at Los Ricos South extending for several kilometres over the Jamaica concessions. This offers the potential for an additional bulk tonnage target in Los Ricos South, with continuity from the Main Area and Eagle.

**Figure 6: Los Ricos District Overview**



**Table 2: Drill Hole Intersections**

Hole ID	Area / Vein	From (m)	To (m)	Length <sup>1</sup> (m)	Au (g/t)	Ag (g/t)	AuEq <sup>2</sup> (g/t)	AgEq <sup>2</sup> (g/t)
LRGAG-20-001	Eagle	138.2	170.9	32.7	1.11	35.1	1.58	118.7
	including	167.3	168.9	1.6	19.09	122.6	20.72	1,554.0
LRGAG-20-002	Eagle	160.5	177.2	16.7	0.24	51.4	0.93	69.4
LRGAG-20-004	Eagle	94.8	113.8	19.0	0.45	57.0	1.21	90.7
	including	97.8	100.0	2.2	1.66	186.4	4.14	310.6
LRGAG-20-005	Eagle	49.6	54.9	5.4	0.68	51.9	1.37	102.6
LRGAG-20-006	Eagle <sup>3</sup>	74.7	107.6	26.9	0.49	57.0	1.25	93.8
	including	83.6	85.6	2.0	1.60	197.6	4.23	317.5
LRGAG-21-007	Eagle	148.5	191.0	42.5	1.64	137.5	3.47	260.6
	including	155.5	156.5	1.0	7.42	493.0	13.99	1,049.5
	including	188.6	190.2	1.6	6.83	1,269.5	23.76	1,781.8
LRGAG-21-008	Eagle	24.7	26.7	2.0	0.58	93.4	1.82	136.7
LRGAG-21-009	Eagle	35.6	73.8	38.2	0.43	34.6	0.89	66.7
	including	42.8	49.8	7.1	1.30	123.8	2.95	221.3
LRGAG-21-010	Eagle	16.8	51.5	34.7	0.56	47.9	1.20	90.1
	including	38.0	39.0	1.0	7.88	263.0	11.39	854.0
LRGAG-21-011	Eagle	52.1	91.3	39.2	0.68	58.1	1.45	108.9
	including	64.7	66.2	1.5	2.87	133.7	4.65	348.7
LRGAG-21-012	Eagle <sup>4</sup>	111.3	179.7	66.1	1.29	55.4	2.03	152.0
	including	140.0	141.0	1.0	14.60	1,080.0	29.00	2,175.0
	including	146.8	147.5	0.8	14.95	87.0	16.11	1,208.3
	including	150.5	154.5	4.1	7.36	80.8	8.44	632.8
	including	172.9	174.5	1.7	1.84	127.7	3.54	265.5
LRGAG-21-013	Eagle	90.0	121.7	31.7	0.65	64.5	1.51	113.5
	including	108.6	109.5	0.9	1.30	301.0	5.31	398.5
	including	114.2	115.0	0.8	2.49	274.0	6.14	460.8
LRGAG-21-014	Eagle	144.3	216.9	72.6	5.13	76.0	6.14	460.6
	including	173.1	176.2	3.1	4.86	659.6	13.66	1,024.1
	including	198.8	210.7	11.9	28.58	115.9	30.13	2,259.8
	including	208.6	210.7	2.1	146.03	176.8	148.39	11,128.9
	including	208.6	209.3	0.7	266.00	319.0	270.25	20,269.0
	including	210.0	210.7	0.7	168.50	140.0	170.37	12,777.5
LRGAG-21-015	Eagle	146.5	163.9	17.4	1.02	36.6	1.51	113.1
	including	146.5	147.2	0.7	11.75	284.0	15.54	1,165.2
	and	177.8	179.3	1.4	0.99	69.1	1.92	143.7
LRGAG-21-016	Eagle	175.8	182.6	6.8	0.88	82.4	1.98	148.1
	including	180.3	181.3	0.9	3.42	308.0	7.53	564.5
LRGAG-21-017	Eagle	121.7	145.1	23.4	2.25	133.0	4.02	301.7
	including	125.7	126.3	0.6	25.40	437.0	31.23	2,342.0
LRGAG-21-018	Eagle	127.6	163.0	33.6	1.57	85.5	2.71	203.5
	including	156.9	159.3	2.4	10.51	436.5	16.33	1,225.0
	including	156.9	157.6	0.8	15.00	1,155.0	30.40	2,280.0
	and	177.9	178.6	0.7	36.20	1,500.0	56.20	4,215.0

Hole ID	Area / Vein	From	To	Length <sup>1</sup>	Au	Ag	AuEq <sup>2</sup>	AgEq <sup>2</sup>
		(m)	(m)	(m)	(g/t)	(g/t)	(g/t)	(g/t)
LRGAG-22-019	Eagle	40.2	41.3	1.1	1.17	28.5	1.55	116.5
	and	50.6	53.2	2.6	1.19	35.9	1.67	125.3
LRGAG-22-021	Eagle	72.0	94.5	22.5	2.38	24.4	2.70	202.7
	including	88.4	90.0	1.6	24.60	49.0	25.25	1,894.0
	including	88.4	89.2	0.8	27.40	40.8	27.94	2,095.8
LRGAG-22-023	Eagle	41.5	96.6	55.1	0.82	99.8	2.15	161.2
	including	57.5	65.6	8.1	2.12	519.9	9.06	679.3
	including	60.3	62.6	2.3	4.76	1,471.5	24.39	1,828.9
	including	60.3	61.5	1.2	4.89	2,650.0	40.22	3,016.7
LRGAG-22-027	Eagle	101.7	110.7	9.0	1.54	62.5	2.37	177.7
	including	108.7	109.7	1.0	5.79	33.2	6.23	467.5
LRGAG-22-028	Eagle	44.8	48.8	4.0	0.66	63.7	1.51	112.9
LRGAG-22-029	Eagle	59.0	63.5	4.5	1.20	60.3	2.01	150.6
	and	74.0	94.6	20.6	1.52	217.5	4.42	331.3
	including	75.5	77.5	2.0	8.00	1,865.5	32.87	2,465.5
	including	75.5	76.5	1.0	14.15	3,520.0	61.08	4,581.3
LRGAG-22-030	Eagle	42.9	79.5	36.7	1.77	156.2	3.85	289.0
	including	51.9	61.0	9.1	6.00	553.3	13.38	1,003.2
	including	54.1	54.8	0.7	14.00	1,260.0	30.80	2,310.0
LRGAG-22-031	Eagle	58.0	126.0	68.0	4.25	109.4	5.71	428.4
	including	78.0	113.9	35.9	7.83	184.9	10.29	771.8
	including	80.0	95.0	15.0	15.61	273.3	19.26	1,444.4
	including	80.0	86.0	6.0	20.96	472.8	27.26	2,044.5
	including	84.0	86.0	2.0	46.80	272.5	50.43	3,782.5

1. Not true width
2. AqEq converted using a silver to gold ratio of 75:1 at recoveries of 100%
3. Excludes 6.0m historically mined void
4. Excludes 2.3m historically mined void
5. Holes LRGAG-21-020, 022, 024, 025, 026 did not intercept significant mineralization.

**Table 3: Drill Hole Locations**

Hole ID	Easting	Northing	Elevation	Azimuth	Dip	Length
LRGAG-20-001	610102	2328248	1295	50	-65	237
LRGAG-20-002	610102	2328219	1306	50	-65	218
LRGAG-20-003	610176	2328321	1306	50	-45	76
LRGAG-20-004	610175	2328321	1306	0	-90	143
LRGAG-20-005	610165	2328340	1304	50	-45	70
LRGAG-20-006	610164	2328339	1303	0	-90	140
LRGAG-21-007	610058	2328297	1284	50	-75	292
LRGAG-21-008	610172	2328402	1313	50	-50	89
LRGAG-21-009	610170	2328401	1312	0	-90	140
LRGAG-21-010	610142	2328443	1311	50	-50	103
LRGAG-21-011	610141	2328442	1311	0	-90	132
LRGAG-21-012	610056	2328370	1282	50	-75	231
LRGAG-21-013	610055	2328369	1282	50	-50	191
LRGAG-21-014	610055	2328369	1282	0	-90	321
LRGAG-21-015	610059	2328297	1284	50	-50	235

LRGAG-21-016	610058	2328296	1284	0	-90	257
LRGAG-21-017	610058	2328345	1283	50	-50	227
LRGAG-21-018	610058	2328344	1283	50	-75	254
LRGAG-22-019	610143	2328421	1308	50	-50	109
LRGAG-22-020	609704	2328800	1235	50	-45	114
LRGAG-22-021	610026	2328548	1271	50	-50	216
LRGAG-22-022	610096	2328608	1301	50	-45	157
LRGAG-22-023	610142	2328420	1307	50	-85	150
LRGAG-22-024	610096	2328607	1300	50	-70	173
LRGAG-22-025	609703	2328799	1234	50	-90	141
LRGAG-22-026	609806	2328557	1234	50	-45	306
LRGAG-22-027	610026	2328548	1271	50	-70	218
LRGAG-22-028	610062	2328514	1272	50	-53	210
LRGAG-22-029	610058	2328443	1278	50	-50	167
LRGAG-22-030	610061	2328513	1272	50	-70	266
LRGAG-22-031	610061	2328513	1272	0	-90	322

### VRIFY Slide Deck and 3D Presentation

VRIFY is a platform being used by companies to communicate with investors using 360° virtual tours of remote mining assets, 3D models and interactive presentations. VRIFY can be accessed by website and with the VRIFY iOS and Android apps.

The VRIFY 3D Slide Deck for GoGold can be viewed at: <https://vrify.com/companies/gogold-resources-inc> and on the Company's website at: [www.gogoldresources.com](http://www.gogoldresources.com).

### Los Ricos District Exploration Projects

The Company's two exploration projects at its Los Ricos Property are in Jalisco state, Mexico. The Los Ricos South Project began in March 2019 and an initial Mineral Resource was announced on July 29, 2020 which disclosed a Measured & Indicated Mineral Resource of 63.7 million ounces AgEq grading 199 g/t AgEq contained in 10.0 million tonnes, and an Inferred Mineral Resource of 19.9 million ounces AgEq grading 190 g/t AgEq contained in 3.3 million tonnes. An initial PEA on the project was announced on January 20, 2021 indicating an NPV<sub>5%</sub> of US\$295M.

The Los Ricos North Project was launched in March 2020 and an initial Mineral Resource was announced on December 7, 2021, which disclosed an Indicated Mineral Resource of 87.8 million ounces AgEq grading 122 g/t AgEq contained in 22.3 million tonnes, and an Inferred Mineral Resource of 73.2 million ounces AgEq grading 111 g/t AgEq contained in 20.5 million tonnes. The Company has a drill program for an additional 100,000 metres of drilling for 2022 in place.

### Procedure, Quality Assurance / Quality Control and Data Verification

The diamond drill core (HQ size) is geologically logged, photographed and marked for sampling. When the sample lengths are determined, the full core is sawn with a diamond blade core saw with one half of the core being bagged and tagged for assay. The remaining half portion is returned to the core trays for storage and/or for metallurgical test work.

The sealed and tagged sample bags are transported to the ALS Chemex facility in Zacatecas, Mexico. ALS Chemex crushes the samples and prepares 200-300 gram pulp samples with ninety percent passing Tyler 150 mesh (106µm). The pulps are assayed for gold using a 30-gram charge by fire assay (Code AA23) and over limits greater than 10 grams per tonne are re-assayed using a gravimetric finish (Code ME-GRAV21). Silver and multi-element analysis is completed using total digestion (Code ME-ICP61 Total Digestion ICP). Over limits greater than 100 grams per tonne silver are re-assayed using a gravimetric finish (ME-GRA21).

Quality assurance and quality control ("QA/QC") procedures monitor the chain-of-custody of the samples and includes the systematic insertion and monitoring of appropriate reference materials (certified standards, blanks and duplicates) into the sample strings. The results of the assaying of the QA/QC material included in each batch are tracked to ensure the integrity of the assay data. All results stated in this announcement have passed GoGold's QA/QC protocols.

Mr. David Duncan, P. Geo. is the qualified person as defined by National Instrument 43-101 and is responsible for the technical information of this release.

### **About GoGold Resources**

GoGold Resources (TSX: GGD) is a Canadian-based silver and gold producer focused on operating, developing, exploring and acquiring high quality projects in Mexico. The Company operates the Parral Tailings mine in the state of Chihuahua and has the Los Ricos South and Los Ricos North exploration projects in the state of Jalisco. Headquartered in Halifax, NS, GoGold is building a portfolio of low cost, high margin projects. For more information visit [gogoldresources.com](http://gogoldresources.com).

### **For further information please contact:**

Steve Low  
Corporate Development  
GoGold Resources  
T: 416 855 0435  
E: [steve@gogoldresources.com](mailto:steve@gogoldresources.com)

#### CAUTIONARY STATEMENT:

The securities described herein have not been, and will not be, registered under the United States Securities Act of 1933, as amended (the "U.S. Securities Act"), or any state securities laws, and may not be offered or sold within the United States or to, or for the benefit of, U.S. persons (as defined in Regulation S under the U.S. Securities Act) except in compliance with the registration requirements of the U.S. Securities Act and applicable state securities laws or pursuant to exemptions therefrom. This release does not constitute an offer to sell or a solicitation of an offer to buy of any of GoGold's securities in the United States.

This news release may contain "forward-looking information" as defined in applicable Canadian securities legislation. All statements other than statements of historical fact, included in this release, including, without limitation, statements regarding the Los Ricos South and North projects, and future plans and objectives of GoGold, including the intention to undertake further exploration at Los Ricos North, and the prospect of further discoveries there, constitute forward looking information that involve various risks and uncertainties. Forward-looking information is based on a number of factors and assumptions which have been used to develop such information but which may prove to be incorrect, including, but not limited to, assumptions in connection with the continuance of GoGold and its subsidiaries as a going concern, general economic and market conditions, mineral prices, the accuracy of mineral resource estimates, and the performance of the Parral project. There can be no assurance that such information will prove to be accurate and actual results and future events could differ materially from those anticipated in such forward-looking information.

Important factors that could cause actual results to differ materially from GoGold's expectations include exploration and development risks associated with GoGold's projects, the failure to establish estimated mineral resources or mineral reserves, volatility of commodity prices, variations of recovery rates, and global economic conditions. For additional information with respect to risk factors applicable to GoGold, reference should be made to GoGold's continuous disclosure materials filed from time to time with securities regulators, including, but not limited to, GoGold's Annual Information Form. The forward-looking information contained in this release is made as of the date of this release.